

# XR937H

## Large View Light Reactive Welding and Grinding Helmet

### User Instructions



**1. Introduction**

Thank you for your purchase of the Parweld XR937H Welding Helmet. Please read and understand this instruction manual thoroughly to ensure correct, safe and effective use of the helmet. Failure to do so can result in serious injury. Keep this manual in a safe place for future reference.

**2. Product Features**

The XR937H uses a thin Liquid Crystal Display coupled to which sensors react instantly to the arc being struck and switch the display to block the light before it is registered by the eye. The dark shade can be adjusted from 5-13 DIN depending upon the application. The lens system also includes permanent UV and IR filters which ensure full time protection for the user even in the light state or a failure mode. The helmet uses a true colour filter which improves the contrast and visibility especially with green LED's and the colours of the ARC are more realistic.

<b>Working Temperature</b> Range from -10 to +60°C.	<b>Storage Temperature</b> Range from -20 to +70°C.	<b>Relative Humidity</b> Range from 20% to 80%.
--	--	--

**3. Technical Specifications and Parameters**

View area (mm):	101 x 94
Shade Range	Clear state: DIN 4
	DIN 5-9, Stepless Adjustable
	DIN 9-13, Stepless Adjustable
Switching Time	1/30000s
Clearing Delay	0.1-1.0s, Stepless Adjustable
Sensitivity Control	Low to High, Toggle Adjustment
Operation Mode	Weld or Grind
UV/IR Protection	DIN 16 Permanent
Alerts	ADF Self-check, Low Battery Alarm



**4. Controls**



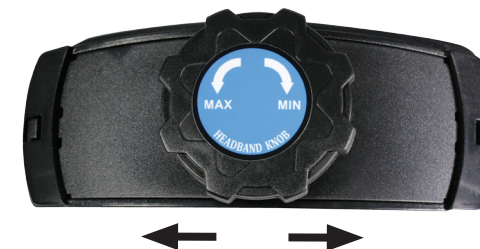
**5. Adjustment to Suit Your Head**

Adjust the rake angle so the viewing window is in front of the eyes and the base of the helmet sits close to the chest in the down position.

Slacken the external adjusting knob on the side and then move the tab inside to set the rake angle.

**a. Headband Size**

Adjust the headband diameter so the helmet slips over your head.



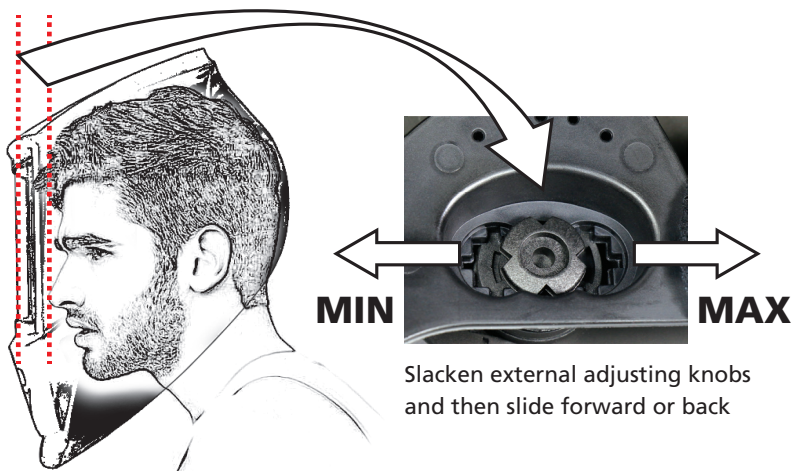
Then adjust the two other headbands so that they touch the top of your head in the normal wearing position.



This will improve the long term comfort when wearing the helmet.

## 5. Adjustment to Suit Your Head

### b. Adjust the Distance Between Face and ADF



Slacken external adjusting knobs and then slide forward or back

## 6. Operating Instructions

- Open the package and take out the helmet. Check to make sure it is intact and undamaged including the lithium battery, installed on the helmet.
- Do not use the Welding Helmet if the lens is cracked or if the lens is dirty.
- **Adjusting the switch sensitivity** – the operator can adjust the amount of light required for the lens to darken, depending on working conditions. Reduce sensitivity to avoid interference from lighting or other welders nearby. When working with a low power or TIG welding high sensitivity is preferred.
- **Adjusting dark to clear delay** – the time for the filter to return to clear state can be adjusted, depending on working conditions level. When welding is stopped, the filter screen automatically changes from dark to clear state according to the

time setting selected. For high amperage select a long delay or for TIG applications to prevent flickering at low power. Short delay is preferred for spot welding applications.

- **Adjusting the Shade Range** – the operator can select (DIN) variable shades from 9 to 13 at the turn of the shade knob. Refer to **Recommended Shade Numbers** on page 5 for shade selection.
- This helmet provides protection for arc welding purposes only. It is not suitable for laser welding processes. The Welding Helmet will not protect against severe impact hazards. The Welding Helmet will not protect against explosive devices or corrosive liquids.
- Use only at temperatures within the operating range.

## 7. Maintenance

### To Replace the Cover Lens

- Remove the Front Lens Cover by sliding the 2 tabs at the base of the filter unit on the inside of the helmet to the unlock position.
- Lift up the lower end of the frame and the ADF unit and slide out the old filter.
- Remove the protection film from both sides of the new Lens. Place the new Lens into position.
- Refit the ADF and the locking frame ensuring the tabs at the top of the frame are engaged before locking the sliders at the base.
- Clean the filter lens with a lint-free tissue or cotton cloth.
- Do not immerse the lens in water or any other liquid. Do not use abrasives, solvents or oil based cleaners.

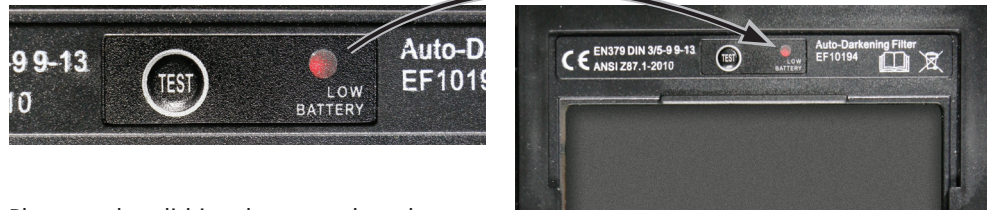
- Do not remove the Auto-Darkening filter from the Auto-Darkening Welding Helmet. Do not try to open the filter.
- Clean filter's surfaces regularly. Protect filter from contact with any liquid and dirt. Do not immerse the filter in water.
- Should the Auto-Darkening Welding Helmet not darken upon striking an arc, stop welding immediately and check if the battery needs replacing. If the lens still does not darken, have the helmet checked by an authorized service technician.
- Replace the Front Lens Cover if it is cracked, scratched or damaged in any way.
- The Auto Darkening Filter must never be placed on a hot surface.

## Recommended Shade Numbers

	CURRENT AMPERES																							
WELDING PROCESS	0,5	1	2,5	5	10	15	20	30	40	60	80	100	125	150	175	200	225	250	275	300	350	400	450	500
Covered Electrodes	Shade 9								10	Shade 11				Shade 12				Shade 13		14				
MIG Plate Welding	Shade 10						Shade 11			Shade 12				Shade 13			14							
MIG Sheet Welding	Shade 10						Shade 11			Shade 12	Shade 13		Shade 14		15									
TIG	Shade 9		10	Shade 11			Shade 12		Shade 13	Shade 14														
MAG	Shade 10						11	12	Shade 13				Shade 14		Shade 15									
Arc Gouging	Shade 10										11	12	13	14	Shade 15									
Plasma Cutting	Shade 11						Shade 12				Shade 13													
Plasma Welding	4	5	6	7	8	9	10	11	Shade 12			Shade 13			Shade 14		Shade 15							

**7. Maintenance**

**Replacement of Batteries**

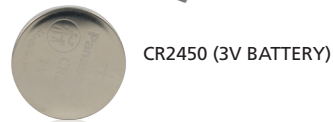


Please replace lithium battery, when the low-voltage indicator is showing red.

Carefully open battery compartment. Replace battery, then slide the compartment lid snap to close.

Press the test button to check the ADF is working correctly, this should work immediately changing from light to dark. Then turn to the light position immediately and the device is ready to use.

Dispose of used batteries correctly, by local government regulation or send to a professional organisation.



**8. Warranty**

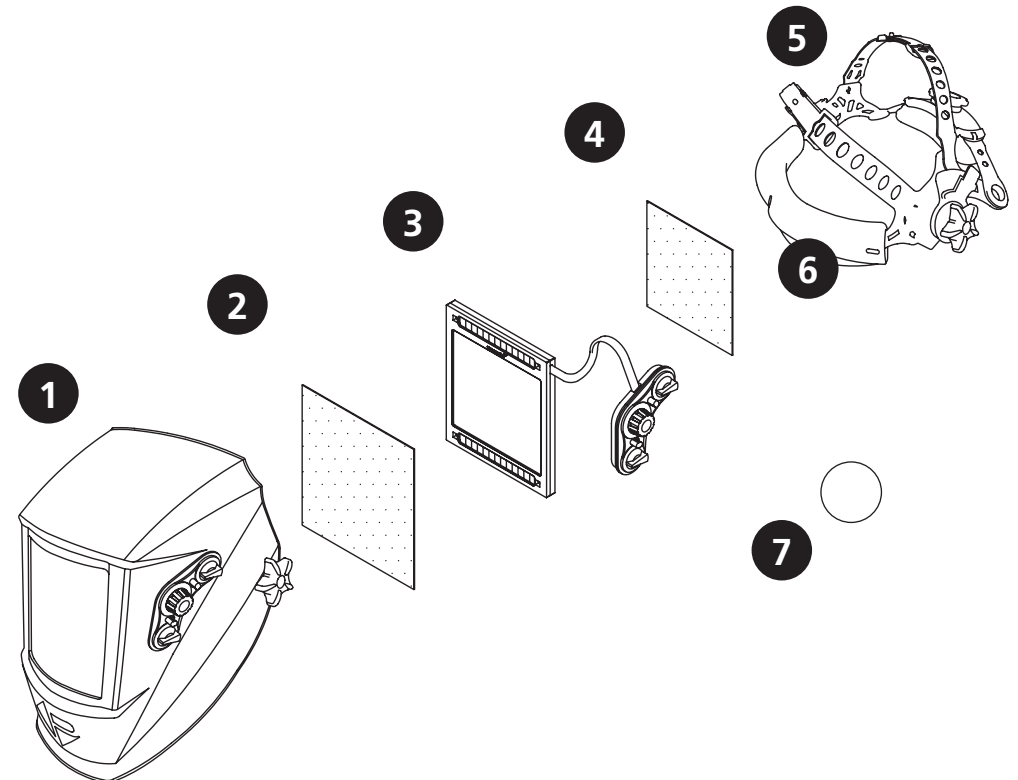
The manufacturer provides a warranty of 24 months from invoice date for all manufacturing defects. The warranty becomes void if not operated according to the instruction manual. The warranty becomes void if the helmet has been modified in any way.

**9. Storage**

- Remove the battery when the helmet is not in use for a long period of time.
- Store the helmet in grind mode when not in use.
- Storage temperature range is -20°C ~ 70°C.

**10. Parts List**

Item	Description	Part No
1	Welding Helmet Complete	XR937H
2	Front Cover Lens	XR9720
3	Auto-Darkening Filter (ADF)	XR9700
4	Inside Cover Lens	XR9730
5	Headband Assembly	XR9740
6	Sweatband	XR1012
7	Battery :- Twin Battery Type Single Battery Type	XR363 CR2450





[parweld.com](http://parweld.com)



[@ParweldLtd](https://twitter.com/ParweldLtd)



[ParweldTV](https://www.youtube.com/ParweldTV)



[parweld\\_uk](https://www.instagram.com/parweld_uk)

## **PARWELD LIMITED**

Bewdley Business Park, Long Bank,  
Bewdley, Worcestershire, DY12 2TZ

**T +44 (0) 1299 266 800**

**UK AND IRELAND SALES +44 (0) 1299 269 500**

**EXPORT SALES +44 (0) 1299 269 507**

**E [info@parweld.co.uk](mailto:info@parweld.co.uk) [www.parweld.com](http://www.parweld.com)**

**parweld**   
WELDING THE FUTURE